

MADE IN EUROPE



This product has been developed and manufactured using both raw materials and with production in Europe.

Choose quality, save money, and protect the environment.

(UK) User Manual

08_20221209_UK

Sit Move



MC 003-7500



MC 003-7501



MC 003-7502



MC 003-7503



	Article no.	HMI no.	Name - Size	UDI-DI/GTIN
<input type="radio"/>	MC 003-7500	102537	Sit Move - Bottom	5744001972502
<input type="radio"/>	MC 003-7501	102538	Sit Move - Top	5744001972519
<input type="radio"/>	MC 003-7502	-	Sit Move - Set	5744001972526
<input type="radio"/>	MC 003-7503	112058	Sit Move - Top - L	5744001973615

Regulation MDR 2017/745 for medical devices class 1



ISO 12 31 03 20

The Original Nordic
Human Handling Concept



Developed &
Manufactured by:



Thank you for choosing a product from master care A/S.

We recommend reading the user manual thoroughly before using the product (-s).

The information in this user manual applies to the shown products provided that the products have not been modified or customized and that the products have been used as recommended in this user manual.

If the customer changes, repairs or uses the product in other combinations than recommended by master care A/S the CE-approval no longer applies and the guarantee becomes void.

In case of doubt, contact master care A/S or our distributor in your area.

MDR (EU) 2017/745:

Products in this user manual are CE-approved and follows the harmonized standards. This means that the products are in compliance with the essential health and safety directives. The product(-s) comply with the standards in the Medical Device Regulation MDR (EU) 2017/745 – Class 1.

The intended use of the product/-s:

The intended use is to reduce friction while moving backwards for users who have difficulties moving their pelvis from the surface during transfer.

The product can slide from side to side and diagonally. Only users who understands how the product works and with trunk stability should use the product. With this product it is possible to slide diagonally forwards which can result to sliding down.

Correct use of the product:

The product is placed under the users pelvic. The sliding properties between the 2 parts makes the user capable to transfer in the chair or from chair to bed. A helper can assist via the handles on the Top.

Warning:

The product makes it possible to slide diagonally forwards which can result to sliding down.

Risk assessment:

Always make a risk assessment and a functional assessment of the user prior to using the product. This way using the product for transferring or moving a user, is ergonomic and legally sound.

Knowledge of the product/transferring:

It is important that the user of the product has been properly instructed in the use of the product and has read the user manual thoroughly prior to using the product.

master care A/S and our distributors provide education in the use of products and on our website all user manuals can be found.

Life span:

The expected life span of products with nylon sliding material with daily wear and tear and washing averagely is 1-3 years. The products life span depends on the use, users load, washing and drying temperatures and how often it is washed and dried.

Make visual inspections frequently and preferably before every use. Products with insufficient friction reduction, defect seams, broken material or other deficiencies must be discarded. This way you will always keep a sound and healthy work environment for both helper and user.

Guarantee:

master care A/S provide a 2-year guarantee covering material defects and manufacturing defects if the product has been used correctly.

Unintended events and injuries when misusing the products:

Unintended events must always be reported to the appropriate National Authority and to master care A/S or the distributor in the current country.

master care A/S and our distributors take no responsibility for personal injuries or product damages if the product(-s) have been used in contravention of the by the manufacturer recommended intended purpose or proper use of the product.



User Manual - Sit Move

Table of Contents

Placement	page 2
Move the user backwards sliding from side to side	page 2
Assisted sitting transfer between wheelchair and bed – partially mobile user	page 2
Transfer between wheelchair and bed - mobile user	page 3
Turning into the bed with a Sit Move Top on top of a Satin Sheet - mobile user	page 3
Assisted turning into bed with Sit Move on top of a satin sheet	page 3
Remove the Sit Move from under the user	page 4
Assisted transfer between wheelchair and car seat	page 4
Turning out of the car seat – mobile user	page 4
Technical Specifications	page 6



User Manual - Sit Move

Placement:



1. Place the Sit Move Bottom with the grey surface facing up and with the label "This side up..." against the back of the chair.



2. Place the Sit Move Top on top with the smooth surface facing downwards.

Move the user backwards sliding from side to side:



3. The user leans slightly forward/to the side and slides the pelvis backwards to the opposite side. Repeat on the opposite side until the user is positioned correctly in the chair.



4. If help is needed the helper can pull lightly in the Sit Move Tops handle simultaneously.

Assisted sitting transfer between wheelchair and bed – partially mobile user:



5. The helper grabs the handle on the Sit Move Top and rolls the user's pelvis slightly to the side whilst placing the Master Glide sliding board between the Sit Move Top and Bottom. Lock all relevant breaks.



6. Standing either in front of or behind the user, the helper grabs the handles of the Sit Move Top. The helper is now able to support the user's transfer/sliding from the wheelchair to the bed.



7. For removing the Master Glide, bend it upwards and over the user. This way it slides out easily. If necessary, remove the Sit Move Top when the user is lying in bed.

User Manual - Sit Move

Transfer between wheelchair and bed - mobile user:



8. The user lifts the handle of the Sit Move Top and leans to one side. Place the Master Glide sliding board between the Sit Move Top and Bottom.



9. Place the wheelchair and lock all relevant breaks. Sliding on the Master Glide the user moves onto the bed. Remove the Master Glide by bending it upwards and over the user to slide it out.

Turning into the bed with a Sit Move Top on top of a Satin Sheet - mobile user:



10. For users with satin sheets like Quick On or Silk Master. The user sits on the Sit Move Top on the edge of the bed.



11. The user turns the pelvis into the bed and moves his/her legs into the bed.

Assisted turning into bed with Sit Move on top of a satin sheet:



12. The helper grabs the handle and helps the user glide the pelvis into the bed using the slippery satin surface.

User Manual - Sit Move

Remove the Sit Move from under the user:



13. The user turns to the side clutching the siderail. The helper rolls/folds the Sit Move up and under the user.



14. The user rolls to supine lying or to the opposite side. If necessary, the user tilts the pelvis, and the Sit Move can be removed.

Assisted transfer between wheelchair and car seat:

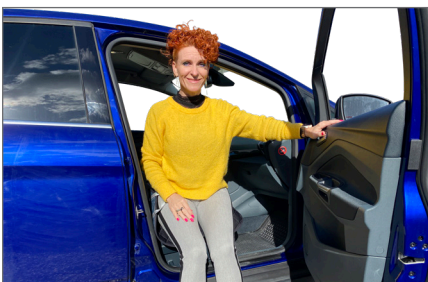


15. Place the Master Glide sliding board between the Sit Move Top and Bottom. Position the wheelchair parallel to the car seat and lock the breaks.



16. The user slides/moves on top of the Master Glide sitting on the Sit Move Top from the car seat to the wheelchair. An extra Sit Move Bottom can be placed on the car seat.

Turning out of the car seat – mobile user:



17. A self-reliant user can use the Sit Move to turn in and out of the car seat.



Attention:
Due to no Non-slip on the product the user must be able to stop the sliding forwards during the transfer.

Product Quality - Care Quality - Quality of Life



User Manual - Sit Move

Technical Specifications

Materials:

Polyester, Polyamide, Alveolen

Article no. - Product Name	Size:	Number of handles:	Max. User Weight:
MC 003-7500 Sit Move - Bottom	L 48 x W 48 cm	2	150 kg
MC 003-7501 Sit Move - Top	L 70 x W 45 cm	2	150 kg
MC 003-7502 Sit Move - Set	-	2	150 kg
MC 003-7503 Sit Move - Top - L	L 70 x W 55 cm	2	150 kg

WARNINGS



Never leave the user on the product when lying on the edge of the bed.



Never leave the product on the floor.



Always make sure that the user is not caught in the straps.



Make sure that all relevant brakes are activated before transferring the user.



CE-certification:

This product is CE-approved and follows the harmonized standards. This means that the products are in compliance with the essential health and safety directives. The product(-s) comply with the standards in the Medical Device Regulation (EU) 2017/745 – class 1.



User Weight:

Recommended max. user weight: 150 kg



Washing:

This product can be washed in a washing machine at max. 40 °C. Gentle washing and dry tumbling significantly prolongs the durability.



Detergents pH level:

This product tolerates detergents / disinfectants with a pH level between 5-9.



Fabric softener:

Never use fabric softener as this will reduce the sliding properties significantly.



Dry Tumbling:

This product may only be dry tumbled gently and at max. 40 °C. Airdrying prolongs the durability significantly.



Surface cleaning:

The surface of this product can be cleaned with a wet cloth and soap.



Disinfectants:

This product tolerates alcoholic disinfectants with a pH level between 5-9.



Ironing:

Do not iron.



Dry cleaning:

Do not dry clean.



Bleach:

Do not bleach.



Maintenance:

Make visual inspections frequently and preferably before every use. Pay attention to torn fabric, seams and straps. Products with high friction or other deficiencies must be discarded.



User Manual:

Always read the User Manual thoroughly before using the product.



Disposal:

Always make sure to follow local guidelines when disposing or discarding the product.

For more information, videos Quick Guide etc., visit www.master-care.dk

Find us on:

